

1

2

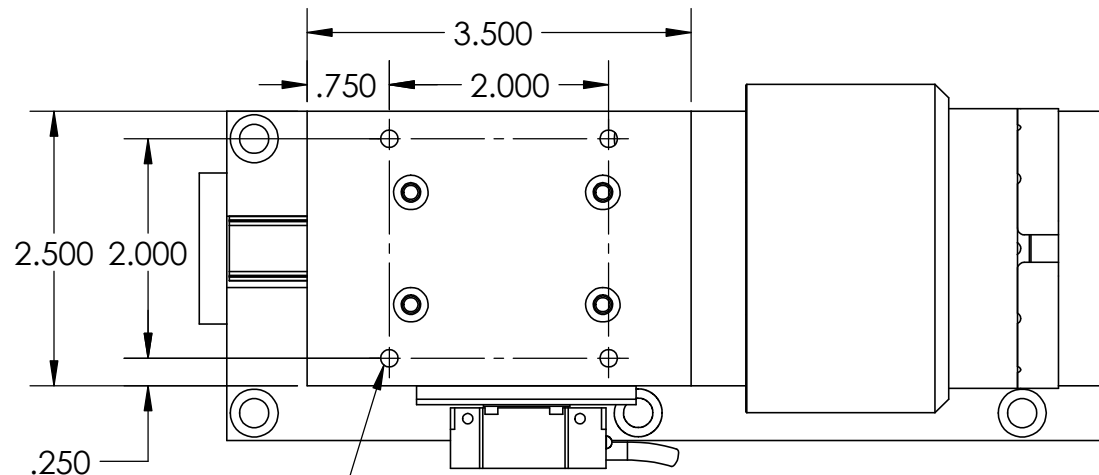
3

4

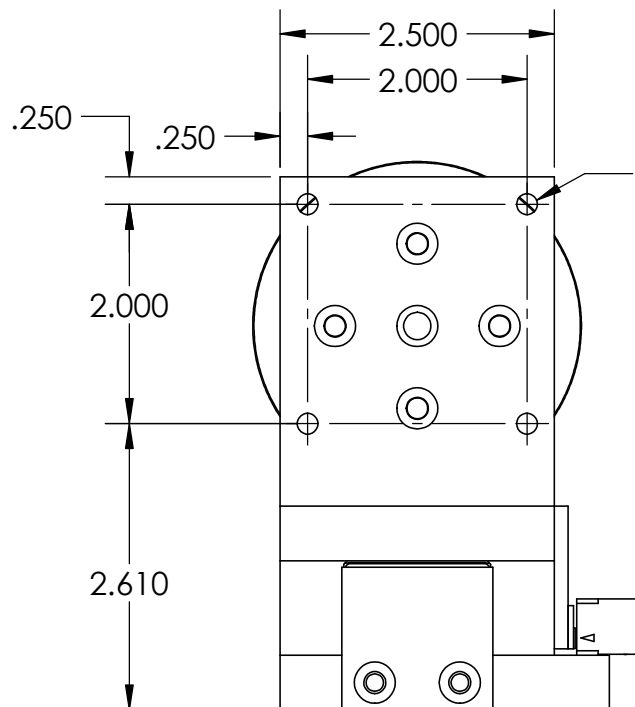
5

REVISION TABLE

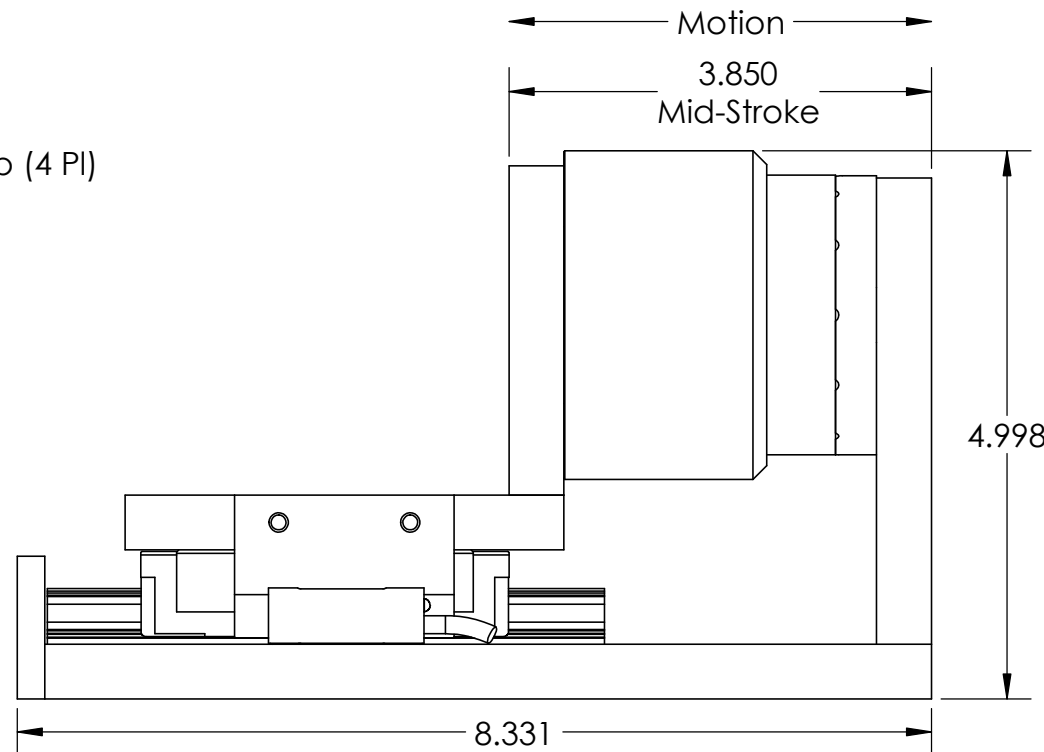
REV	ECN#	DESCRIPTION	REV BY	APPROVED	DATE
---	---	Original Drawing	OOG	MPW	9-20-2021



TAP 1/4-20 x .50Dp (4 PI)



TAP 1/4-20 x .50Dp (4 PI)



A

A

B

B

C

C

D

D



H2W Technologies, Inc.
 Santa Clarita, CA 91350 USA
 Tel: (661) 291-1620
www.h2wtech.com

These drawings and specifications are the property of H2W Technologies, Inc. They are issued in confidence and shall not be reproduced, copied, or used without written permission from H2W Technologies, Inc.

UNLESS SPECIFIED OTHERWISE:
 All dimensions are in inches
 Standard Tolerances are as follows
 .XXX ±.005 ANGLES ±.1°
 .XX ±.010 FILLETS .010
 .X ±.020 CORNERS .010
 Remove All Burrs and Sharp Edges

**FOR
 REFERENCE
 ONLY**

MATERIAL
6061-T6 Aluminum
 FINISH
Anodize Blue

TITLE
**Voice Coil Positioning Stage
 Model #: VCS13-108-LB-01-M**

DWG # **31-0897**
 REV **----**
 DATE **9-20-21** SHEET **1 of 3**

1

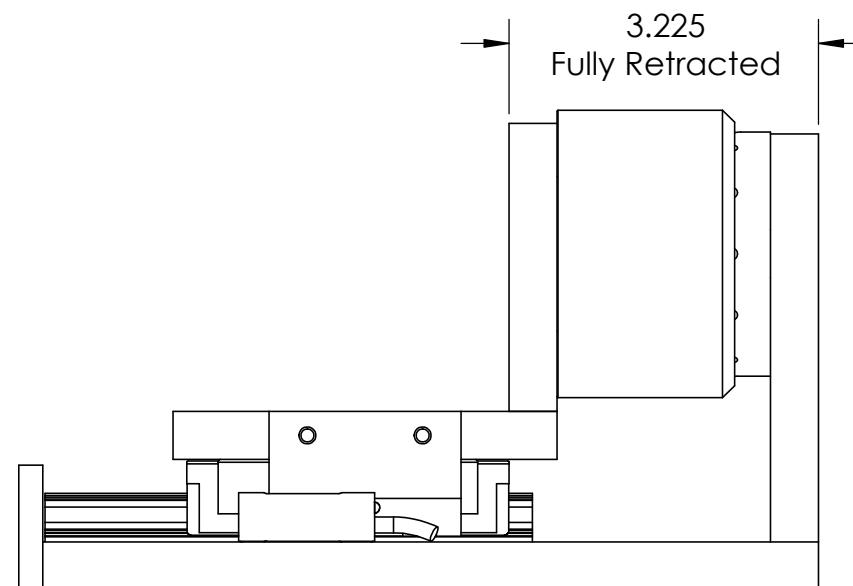
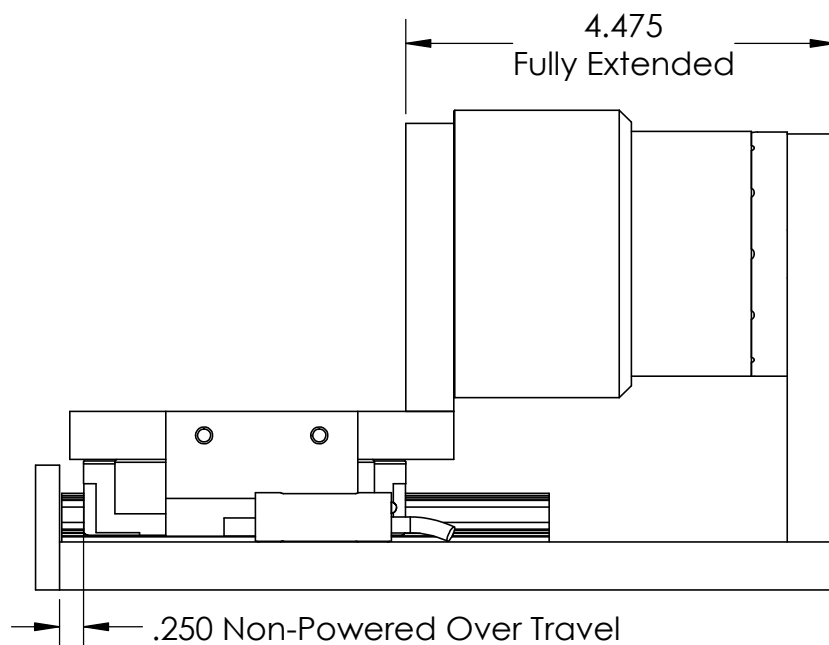
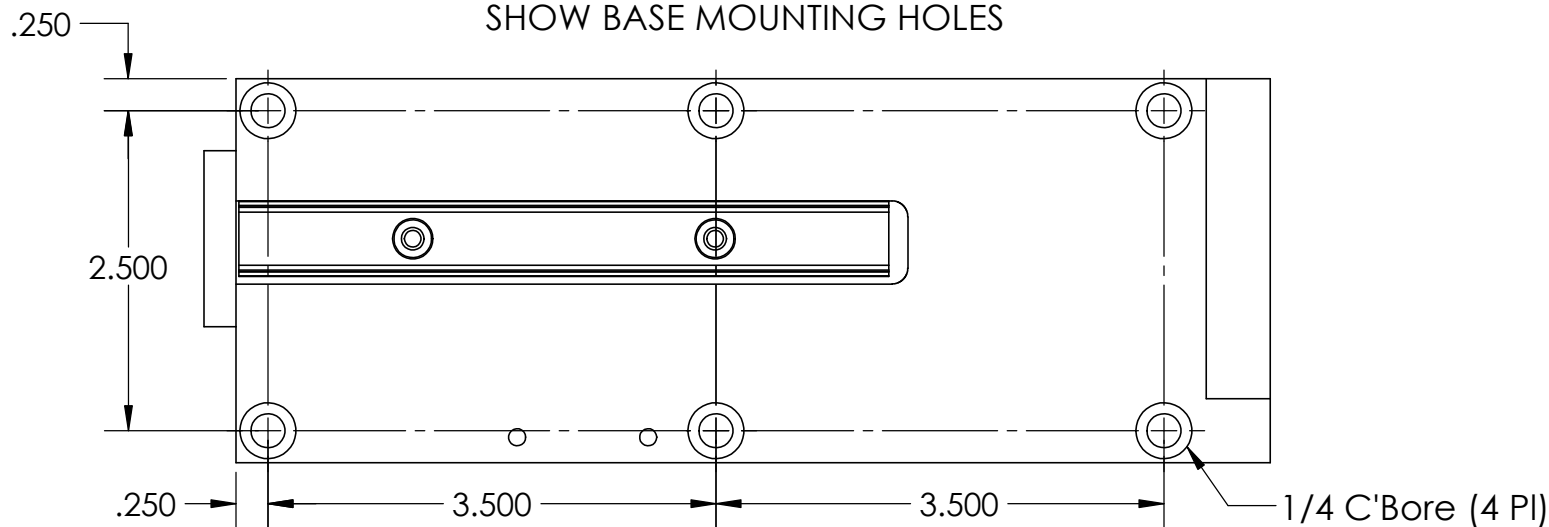
2

3

4

5

PARTS HAVE BEEN HIDDEN TO
SHOW BASE MOUNTING HOLES



H2W Technologies, Inc.
Santa Clarita, CA 91350 USA
Tel: (661) 291-1620
www.h2wtech.com

These drawings and specifications are the property of H2W Technologies, Inc. They are issued in confidence and shall not be reproduced, copied, or used without written permission from H2W Technologies, Inc.

UNLESS SPECIFIED OTHERWISE:
All dimensions are in inches
Standard Tolerances are as follows
.XXX ±.005 ANGLES ±.1°
.XX ±.010 FILLETS .010
.X ±.020 CORNERS .010
Remove All Burrs and Sharp Edges

**FOR
REFERENCE
ONLY**

MATERIAL

6061-T6 Aluminum

FINISH

Anodize Blue

TITLE

**Voice Coil Positioning Stage
Model #: VCS13-108-LB-01-M**

DWG #

31-0897

REV

DATE

9-20-21

SHEET

1 of 3

1

2

3

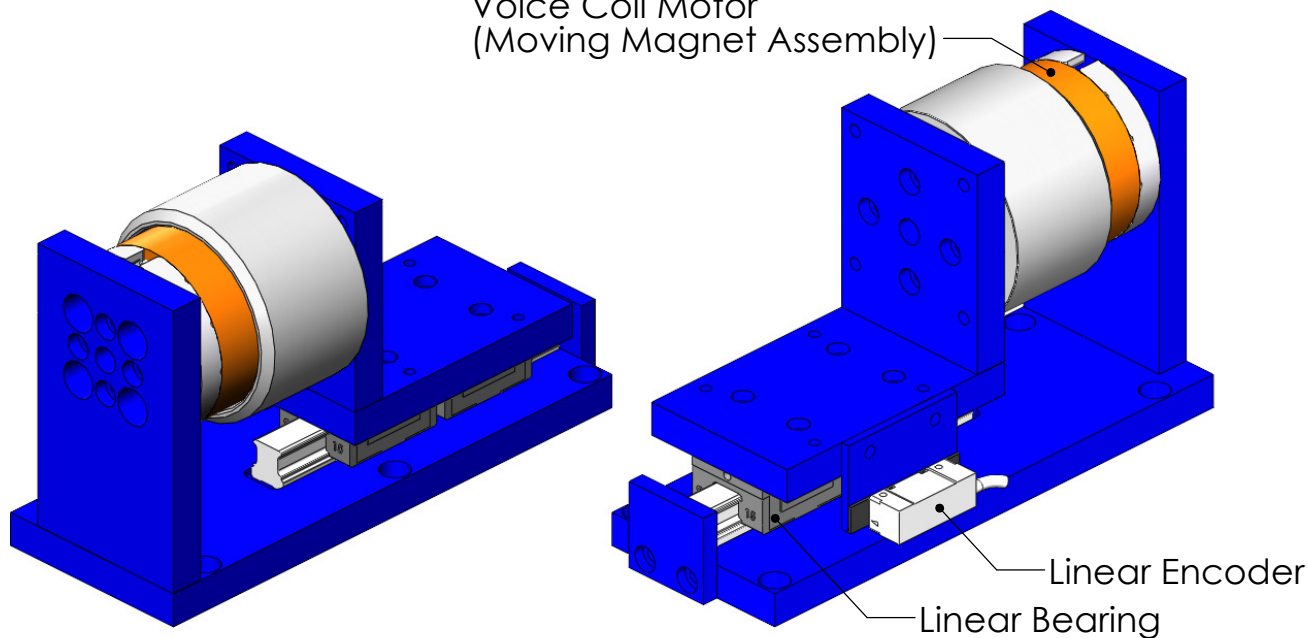
4

5

MOVING COIL NON-COMM ACTUATOR SPECIFICATIONS

Motor P/N	NCC13-30-108-1H	
Stroke	1.25"	31.8 mm
Encoder Resolution	1 micron	
Bearing Type	Linear Bearing	
Moving Mass	3.71 lbs	1.79 kg
Total Mass	5.87 lbs	2.66 kg
Resistance @ 20C	4.8 ohms	
Inductance @ 20C	4.1 mH	
Electrical Time Constant	0.9 msec	
Motor Constant	2.3 LBS/SQRT(Watt)	7.6 N/SQRT(Watt)
Force Constant	5.0 LBS/Amp	22.3 N/Amp
Back EMF	0.5 V/ips	22.3 V/m/sec
Continuous Force	10.8 LBS	48 N
Max Power @ 100% Duty	23 Watts	
Peak Force	32.4 LBS	144 N
Max Power @ 10% Duty	200 Watts	

Voice Coil Motor
(Moving Magnet Assembly)



H2W Technologies, Inc.
Santa Clarita, CA 91350 USA
Tel: (661) 291-1620
www.h2wtech.com

These drawings and specifications are the property of H2W Technologies, Inc. They are issued in confidence and shall not be reproduced, copied, or used without written permission from H2W Technologies, Inc.

UNLESS SPECIFIED OTHERWISE:
All dimensions are in inches
Standard Tolerances are as follows
XXX ±.005 ANGLES ±.1°
.XX ±.010 FILLETS .010
.X ±.020 CORNERS .010
Remove All Burrs and Sharp Edges

**FOR
REFERENCE
ONLY**

MATERIAL
6061-T6 Aluminum
FINISH
Anodize Blue

TITLE
**Voice Coil Positioning Stage
Model #: VCS13-108-LB-01-M**

DWG # **31-0897**
REV **----**
DATE **9-20-21** SHEET **1 of 3**